

S U M M E R H O M E



W I N T E R P L A C E



B L U E V I S T A

SUMMER HOME / WINTER PLACE

SUMMER HOME WINTER PLACE





A retreat in the woods has a distinct feeling. The feeling of escaping the everyday, embracing and connecting with nature. A quiet evening in the snowy winter, a glass of wine, a dip in the hot tub, a fire crackling, curling up with your favourite book. Fresh summer mornings with the feeling of rejuvenation with the rising of the sun, fresh dew on blades of grass, exploring the trails, the sound of birds in the trees.

Now, Imagine your retreat in the woods, elevated to a new level. A fresh, modern design on the interior and exterior, surrounded by a lush natural setting.

This is Blue Vista. The best of both worlds, your modern connection to nature. There's never an off-season in the sanctuary of the woods.

BLUE MOUNTAIN

BLUE MOUNTAIN
VILLAGE

SCANDINAVE
← SPA


BLUE VISTA
SUMMER HOME / WINTER PLACE



GEORGIAN BAY

MONTERRA
GOLF COURSE

THE PATH IN THE WOODS

A road winds through Blue Mountain, under the shade of the trees and the shadow of the mountain. Rays of light peek through the leaves and dance on the path through the woods. You've made it home.

Located off Grey County Road 21, between the Scandinave Spa and the Monterra Golf Course, Blue Vista provides plenty of privacy within a natural landscape. A tree-lined street leads through the woods, the beautiful **view of Blue Mountain** rises up above the trees. There is no better vacation destination year-round. Only moments to the amenities that matter the most, a **short drive to downtown Collingwood and Thornbury** and with the beautiful **Georgian Bay shoreline just minutes away**, there are endless opportunities for the adventurer in all of us.

Photo Credit: David Stewart Media





GREAT AMENITIES MAKE GREAT NEIGHBOURS

Your Blue Vista address offers more than just a beautiful modern home surrounded by the beauty of nature with the best neighbours you could ask for.

To one side of the Blue Vista site, find the **Scandinave Spa**. One of the most desirable spas, not only in Blue Mountain, but in all of Ontario. Spend a romantic day at the spa with a couples massage, or take some personal relaxation time and soak in the outdoor baths.

To the other side, find the wide, open and revered **Monterra Golf Course**. Enjoy an inspired game with rolling bent grass fairways, ravines, 86 bunkers and lakes. At Blue Vista, your next tee time is only minutes from your front door.

Photo Credit: Andrea Hamlin Photography





NEIGHBOURHOOD VILLAGE

Along with the mountain itself, Blue Vista residents are also only moments away from the revered **Blue Mountain Village**. All year round the village offers **family-friendly activities, shopping, restaurants and festivals**. The location gives you the unique opportunity to escape from the city and enjoy boundless nature, yet at the same time enjoy a popular destination with every amenity you could ever want or need.

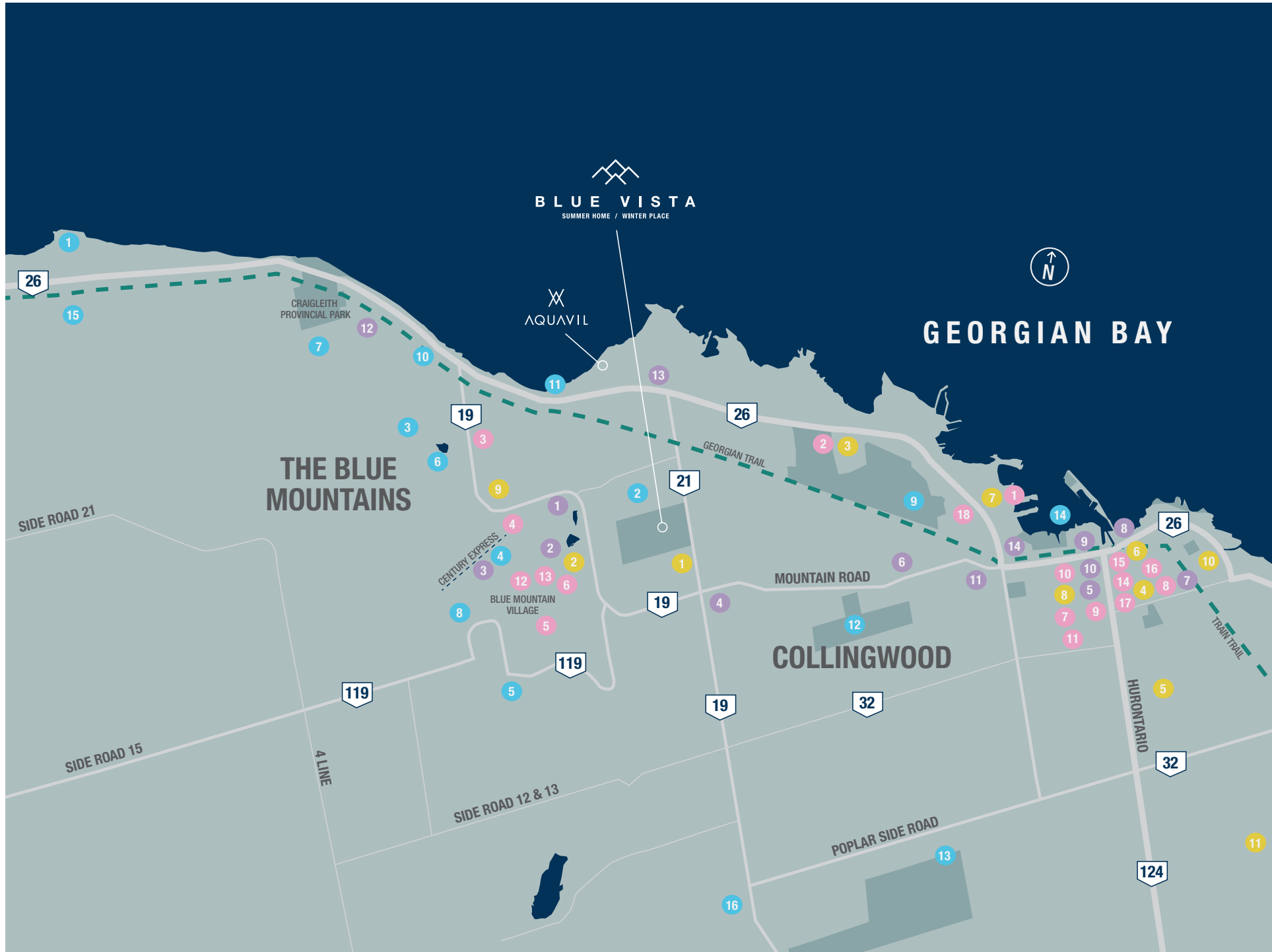
Photo Credit: David West Photography





**ADVENTURE AWAITS. EXPLORE
260 KMS OF TRAILS STRETCHING
OUT AROUND AND WINDING
THROUGH THE BLUE MOUNTAIN
AREA. HIKE, BIKE, STROLL OR JOG
THROUGH THE SCENIC PATHWAYS
AND ENJOY MOTHER NATURE'S
FINEST GIFTS.**





LOCAL ATTRACTIONS & AMENITIES

RESTAURANTS

- | | |
|---------------------------------|-----------------------------|
| 1. LAKESIDE SEAFOOD AND GRILL | 9. TESORO RESTAURANT |
| 2. GUSTAV CHOPHOUSE & BAR | 10. BENT TACO |
| 3. THONBURI THAI FOOD | 11. THE HURON CLUB |
| 4. THE POTTERY RESTAURANT | 12. COPPER BLUES |
| 5. OLIVER & BONACINI CAFÉ GRILL | 13. THOLOS RESTAURANT |
| 6. NORTHWINDS BREWPUB | 14. PRIME SEVEN NINE |
| 7. THE TREMONT CAFÉ | 15. SÖL KITCHEN |
| 8. BRUNELLO AT 27 ON FOURTH | 16. LOW DOWN |
| | 17. GIBSON AND COMPANY |
| | 18. HARBOUR STREET FISH BAR |

SHOPS

- | | |
|--|----------------------------|
| 1. VILLAGE MARKET | 8. SOBEYS COLLINGWOOD |
| 2. L'OCCITANE EN PROVENCE | 9. LCBO |
| 3. COLUMBIA SPORTSWEAR | 10. LOBLAWS |
| 4. MOUNTAINSIDE SPORTS | 11. METRO |
| 5. DAGS & WILLOW FINE CHEESE & GOURMET SHOP | 12. BLACK ANGUS |
| 6. BANFF SPORT COLLINGWOOD SKI & SNOWBOARD RENTALS | 13. SQUIRE JOHN'S SKI SHOP |
| 7. COLLINGWOOD REAL FOOD MARKET | 14. SKIIS & BIKES |

FOUR SEASONS ACTIVITIES

- | | |
|-----------------------------------|--------------------------------------|
| 1. DELPHI POINT PARK | 9. CRANBERRY GOLF COURSE |
| 2. MONTERRA GOLF COURSE | 10. BLUE SURF |
| 3. CRAIGLEITH SKI CLUB | 11. BLUE MOUNTAIN KITEBOARDING |
| 4. BLUE MOUNTAIN SKI RESORT | 12. BLUE MOUNTAIN GOLF COURSE |
| 5. SCENIC CAVES NATURE ADVENTURES | 13. OSLERBROOK GOLF AND COUNTRY CLUB |
| 6. TORONTO SKI CLUB | 14. COLLINGWOOD HARBOUR |
| 7. ALPINE SKI CLUB | 15. GEORGIAN PEAKS SKI CLUB |
| 8. CANOPY CLIMB NET ADVENTURE | 16. OSLER BLUFF SKI CLUB |

SERVICES

- | | |
|-------------------------------------|---|
| 1. SCANDINAVE SPA | 7. LIVING SHORE SPA |
| 2. IWA SPA | 8. CROWS NEST BARBER SHOP |
| 3. THE SPA AT GEORGIAN | 9. KALOLA SPA |
| 4. BAYSIDE WELLNESS | 10. COLLINGWOOD GENERAL AND MARINE HOSPITAL |
| 5. BLUE MOUNTAIN ACUPUNCTURE CLINIC | 11. COLLINGWOOD REGIONAL AIRPORT |
| 6. GEORGIAN BAY COSMETIC CLINIC | |

THE ESSENCE OF WINTER

Rising to a fresh snowfall, the world feels still, calm and as picture perfect as a snowglobe. You head to Blue Mountain and suddenly the calm becomes a rush of energy and exhilaration. The cold whips your cheeks as you soar down the ski hill, rewarded after with the warmth of the fire, a hot chocolate and the laughter of friends.

Blue Vista is your Winter Place. Year round, this playground never takes a day off. Snow bunnies, adventurers and those with true Canadian spirit embrace everything winter offers in **Blue Mountain. Blue Vista is your pass to the mountain.**



THE EUPHORIA OF SUMMER

A warm breeze rolls over the waters of Georgian Bay, nature abounds. Birds sing from the leafy green trees and the warmth of the sun leaves you feeling like you're glowing. Long days are spent enjoying every outdoor activity from biking, hiking, boating and swimming, to farmers markets, outdoor patios and loving moments with friends and family.

Blue Vista is your Summer Place! This Blue Mountain location is your outdoor playground. Whether Blue Vista is your forever home or your summer escape, there is always something to enjoy.





Photo Credit: David West Photography

THE SUMMER CULTURE

From concerts and festivals to stunning sunsets and romantic walks, there is always a new activity waiting for you.



THE PATIOS

Explore the taste of the area, from the quaint restaurants in downtown Collingwood or Thornbury, to patios with a view of the lake to the exciting patios in the village to an array of cideries, wineries and breweries, there is always your perfect meal waiting for you to explore.



Photo Credit: David Stewart Media

THE PERFECT DAY

Explore an abundance of local wineries and cideries. Sip on samples of fresh flavours and tour the local offerings, including the Beaver Valley Orchard and Cideries and the Georgian Hills Vineyards.



THE THRILL

Find a new perspective from above the treetops with ziplining at the Scenic Caves Nature Adventures and embrace the great Canadian nature.

Photo Provided by: Scenic Caves Nature Adventures



Photo Credit: David Stewart Media

THE TRAILS

Enjoy hiking, biking or strolling through 260 km of trails through the beautiful Blue Mountain landscape of the Niagara Escarpment.



THE WATER

Take a dip, tour by boat, explore by kayak or lounge on the shores. Whatever your preference is, the waters of the Georgian Bay provide the perfect summer activities.



THE COURSE

Choose from 6 award-winning golf courses in the Collingwood/Blue Mountain area, with the Monterra Golf Course at your doorstep.



Photo Provided by: Scenic Caves Nature Adventures

THE ADVENTURES

Embrace adventure and explore the area's Scenic Caves. You can embrace both history and a sense of wonder following trails through these ancient caves that were formed over a million years ago.



Photo Provided by: Scenic Caves Nature Adventures

THE VIEWS

After hiking through the trails the final reward is the 420 ft suspension bridge. Enjoy breathtaking views from 82 ft in the air above the lush green forest.



Photo Credit: David West Photography

THE WINTER CULTURE

Blue Mountain comes alive in the winter. Explore the slopes, the quaint downtowns, winter events and festivals and endless winter activities.



THE SLOPES

From mountaintop skating, to hitting the trails for cross country skiing or snowshoeing, to soaring down the slopes on skis or a snowboard, a Blue Mountain home gives you a pass to every exhilarating outdoor activity.



THE HIKING

Blue Mountain never rests. Explore snowy, scenic hiking trails by snowshoe or by cross country ski and embrace fresh air.



Photo Credit: David West Photography

THE EVENTS

From the Blumination Trail lighting up over a km of trails to discover, to world class snowboarding and skiing competitions, to thrilling winter festivals, there is always an event going on.



Photo Credit: David West Photography

THE SKATING

Mountaintop skating, trail skating, pond skating. A Saturday afternoon game of hockey or a romantic spin across the ice, your skating adventure is always ready here.

A photograph of a modern house with dark wood siding and large windows. The house is partially obscured by a semi-transparent white box containing text. The background shows a clear sky and some greenery.

SPACIOUS, FRESH DESIGNS,
INTENTIONALLY THOUGHT OUT FOR
A MODERN LIFESTYLE. NATURAL
ELEMENTS & CONTEMPORARY HOMES
COME TOGETHER AT BLUE VISTA.







MODERN DETACHED 4-5 BEDROOM OPTIONS

Blue Vista's Modern Detached provides the perfect family home. Enjoy stylish living with space for a growing and modern family, with a beautiful **main floor, double height ceilings, master suites on the main floor and second floor, a family room and the option of a finished basement.** The Modern Detached models are designed to allow you to create the ideal home to suit your family. Create spaces for a games room, recreational room or guest suites.







DESIGNER BUNGALOWS 2-4 BEDROOM OPTIONS

Blue Vista's Designer Bungalows offer contemporary single level living spaces to suit your lifestyle. Corner windows provide plenty of light and beautiful vistas of the surrounding natural elements. **Loft options offer rooftop terraces, family room and extra bedrooms or guest suites.** **With options of a finished basement,** the bungalow is the ideal home to include a home theatre space, games room and guest room.





CONTEMPORARY SEMIS

2-4 BEDROOM OPTIONS

Blue Vista's Contemporary Semis offer fresh, modern homes with open concept designs and **double height ceilings**. From **Main Floor master suites to a home office or a family room**, the entire family can have a space of their own. **Optional finished basements** can include guest suites and extra areas to relax.





INTERIORS DESIGNED FOR LIFE

Methodically planned and designed for the ultimate modern lifestyle, **Blue Vista provides a family home year-round or the perfect weekend getaway retreat.** Modern interiors are brought to this traditional area and are focused on entertainment, personal space and embracing the natural surroundings. Every design is architecturally modern in style, by design, from the rich exteriors to the smallest interior details.



ROYALTON HOMES BUILDING IN SOUTHERN GEORGIAN BAY SINCE 1998

For over two decades Royalton Homes has been creating high quality developments within the Southern Georgian Bay area.

At Royalton Homes, working with highly professional, award-winning consultants ensures every element exceeds expectations, from planning to marketing, from design to quality construction to ensure happy homebuyers.

Royalton Homes is actively developing another new development in the Town of The Blue Mountains. Aquavil, a waterside community in Craigeleith with 1,100 feet of beachfront on the shores of Georgian Bay.

Registered Builder with Tarion Warranty Corporation since 2001.





CRANBERRY YACHT CLUB



BALMORAL RESIDENCES



CRANBERRY WOODS



CEDAR POINT



CRANBERRY WOODS



MONTERRA RIDGE



B L U E V I S T A

SUMMER HOME / WINTER PLACE

